

SAFE & EFFECTIVE RELIEF



Alpha-Stim® Clinical Results At A Glance

CRANIAL STIMULATION

Physician Survey on 500 Patients Treating with Alpha-Stim®

Condition	N	Worse	No Change	Percent Improvement					Clinically Significant (>25%)
				Slight <24%	Fair 24-49%	Moderate 50-74%	Marked 75-99%	Complete 100%	
Anxiety	349	0%	2%	4%	11%	26%	52%	5%	94%
Depression	184	0%	4%	6%	17%	21%	45%	8%	90%
Stress	259	0%	2%	5%	14%	27%	48%	4%	93%
Insomnia	135	0%	12%	9%	13%	25%	33%	8%	80%

Results of using Alpha-Stim® technology as reported by healthcare practitioners. Total N=500 patients with multiple symptoms. Rounded to nearest percent. For additional information see: Kirsch, Daniel L. (2000). *The Science Behind Cranial Electrotherapy Stimulation*, 2nd Edition, Medical Scope Publishing Corporation, Edmonton, Alberta, Canada, 224 pp.

Peer-Reviewed Outcomes on 2,500 Patients Treating with Alpha-Stim®

Condition	N	Percent Improvement				Clinically Significant (>25%)
		Slight <24%	Fair 24-49%	Moderate 50-74%	Marked 75-100%	
<i>Psychological (All cases)</i>	723	8%	24%	33%	35%	92%
Anxiety (alone)	128	10%	23%	33%	34%	90%
Anxiety (with other)	370	9%	23%	33%	35%	91%
Anxiety/Depression	58	5%	33%	33%	29%	95%
Depression (alone)	53	13%	21%	43%	23%	87%
Depression (with other)	265	11%	23%	35%	31%	89%
Stress	123	5%	24%	32%	39%	95%
Chronic Fatigue	50	6%	60%	20%	14%	94%
Insomnia	163	6%	29%	29%	36%	94%

Results of using Alpha-Stim® technology (at least 3 weeks) from consecutive warranty cards. Total N=2,500 patients with multiple symptoms. For additional information see: Smith, Ray B. (2001) Is microcurrent stimulation effective in pain management? An additional perspective. *American Journal of Pain Management* 11(2):62-66.

For More Information See Alpha-Stim® Research at www.AlleviaHealth.com



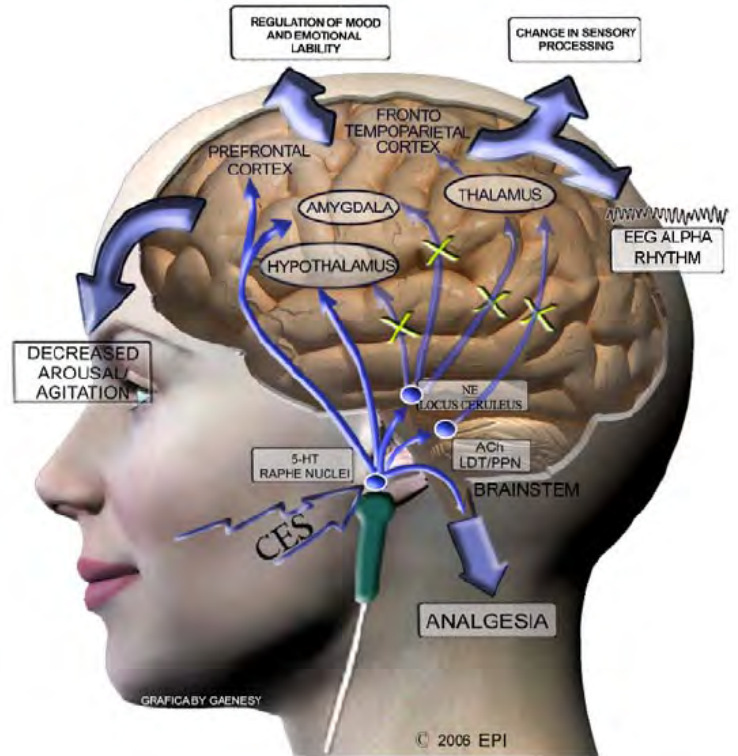
SAFE & EFFECTIVE RELIEF

How ALPHA-STIM® CRANIAL ELECTROTHERAPY STIMULATION WORKS

by James Giordano, Ph.D.

How does Alpha-Stim® cranial electrotherapy stimulation (CES) work? The exact mechanism by which Alpha-Stim® produces effects is not fully known. However, based on previous and ongoing studies, it appears that the Alpha-Stim® microcurrent waveform activates particular groups of nerve cells that are located at the brainstem, a site at the base of the brain that sits atop of the spinal cord. These groups of nerve cells produce the chemicals serotonin and acetylcholine, which can affect the chemical activity of nerve cells that are both nearby and at more distant sites in the nervous system. In fact, these cells are situated to control the activity of nerve pathways that run up into the brain and that course down into the spinal cord. By changing the electrical and chemical activity of certain nerve cells in the brainstem, Alpha-Stim® appears to amplify activity in some neurological systems, and diminish activity in others. This neurological 'fine tuning' is called modulation, and occurs either as a result of, or together with the production of a certain type of electrical activity pattern in the brain known as an alpha state which can be measured on brain wave recordings (called electroencephalograms, abbreviated EEG). Such alpha rhythms are accompanied by feelings of calmness, relaxation and increased mental focus. The neurological mechanisms that are occurring during the alpha state appear to decrease stress-effects, reduce agitation and stabilize mood, and control both sensations and perceptions of particular types of pain.

These effects can be produced after a single treatment, and repeated treatments have been shown to increase the relative strength and duration of these effects. In some cases, effects have been stable and permanent, suggesting that the electrical and chemical changes evoked by Alpha-Stim® have led to a durable re-tuning back to normal function. Electromedical Products International, Inc. is dedicated to using exciting new research technology and advanced, innovative methods to study the exact mechanisms through which Alpha-Stim® can be beneficial to patients with pain, anxiety, depression and sleep disorders.



Alpha-Stim® CES engages the serotonergic (5-HT) raphe nuclei of the brainstem. 5-HT inhibits brainstem cholinergic (ACh) and noradrenergic (NE) systems that project supratentorially. This suppresses thalamo-cortical activity, arousal, agitation, alters sensory processing and induces EEG alpha rhythm. As well, 5-HT can act directly to modulate pain sensation in the dorsal horn of the spinal cord, and alter pain perception, and cognition and emotionality within the limbic forebrain.

Legend

- Blue arrows: inhibitory interactions
- Purple arrows: excitatory interactions
- X : suppressed pathways/interactions

Abbreviations

ACh: acetylcholine; LDT: laterodorsal tegmental nucleus of the brainstem; PPN: pediculo-pontine nucleus of the brainstem; NE: norepinephrine; LC: locus ceruleus, 5-HT: serotonin

Note: Diagram not to scale

James Giordano, Ph.D. is Director of Science for Electromedical Products International, Inc. of Mineral Wells, TX, and is Scholar in Residence at the Center for Clinical Bioethics, Georgetown University Medical Center, Washington, DC. Dr. Giordano is also Visiting Scholar at the Center for Ethics, Dartmouth Medical School, Hanover, NH, and Invited Lecturer at the Roundtable in Arts and Sciences, Oxford University, UK. As a neuroscientist, Dr. Giordano's ongoing work is focused upon neural mechanisms of pain, the philosophy of pain research and practice of pain medicine, and the neuroethical issues inherent to the development and use of emergent technologies in neurology and psychiatry. Dr. Giordano received a Ph.D. in biological psychology from the City University of New York. He was an NIEHS post-doctoral fellow in neurotoxicology and neuroscience at The Johns Hopkins University, Baltimore, MD, served as Visiting Scientist in the Department of Clinical Neuropharmacology, Max Planck Institute for Psychiatry, Munich, Germany, was an American Psychological Association Visiting Fellow in neuroimaging at the Martinos Center for Advanced Imaging, Harvard University Medical School/Massachusetts General Hospital, and completed post-graduate training in bioethics at the Neiswanger Institute for Bioethics and Health Policy, Loyola University/Stritch Medical School, Chicago, IL. The author of over 65 refereed publications on pain, ethics and medical philosophy, Dr. Giordano serves as Neuroscience Section Editor for the Pain Physician journal, Bioethics Editor for the American Journal of Pain Management, and Ethics Section Editor for the journal Practical Pain Management.

SAFE & EFFECTIVE RELIEF



Alpha-Stim® Clinical Results At A Glance

RESULTS FOR PAIN

Physician Survey on 500 Patients Treating with Alpha-Stim®

Condition	N	Worse	No Change	Percent Improvement					Clinically Significant (>25%)
				Slight <24%	Fair 24-49%	Moderate 50-74%	Marked 75-99%	Complete 100%	
Pain	349	0.4%	2%	7%	17%	27%	38%	10%	91%
Muscle Tension	184	0%	4%	6%	17%	21%	45%	8%	90%

Results of using Alpha-Stim® technology as reported by healthcare practitioners. Total N=500 patients with multiple symptoms. For additional information see: Kirsch, Daniel L. (2000). The Science Behind Cranial Electrotherapy Stimulation, 2nd Edition, Medical Scope Publishing Corporation, Edmonton, Alberta, Canada, 224 pp.

Peer-Reviewed Outcomes on 2,500 Patients Treating with Alpha-Stim®

Condition	N	Percent Improvement				Clinically Significant (>25%)
		Slight <24%	Fair 24-49%	Moderate 50-74%	Marked 75-100%	
<i>Pain (all cases)</i>	1,949	7%	32%	38%	23%	93%
Back Pain	403	5%	27%	39%	29%	95%
Cervical Pain	265	7%	26%	47%	20%	93%
Hip/Leg/Foot Pain	160	4%	27%	33%	36%	96%
Shoulder/Arm/Hand Pain	150	9%	27%	42%	22%	91%
Carpal Tunnel	25	0%	20%	68%	12%	100%
Arthritis Pain	188	6%	27%	47%	20%	94%
TMJ Pain	158	11%	38%	38%	13%	89%
Myofascial Pain	62	10%	29%	29%	32%	90%
Reflex Sympathetic Dystrophy	55	18%	29%	35%	18%	82%
Fibromyalgia (alone)	142	9%	37%	37%	17%	91%
Fibromyalgia (with other)	363	9%	36%	42%	13%	91%
Migraines	118	2%	42%	25%	31%	98%
Headache (all other)	112	18%	27%	21%	34%	82%

Results of using Alpha-Stim® technology (at least 3 weeks) from consecutive warranty cards. Total N=2,500 patients with multiple symptoms. For additional information see: Smith, Ray B. (2001) Is microcurrent stimulation effective in pain management? An additional perspective. American Journal of Pain Management 11(2):62-66.

Note: Clients may have treated pain with Alpha-Stim® microcurrent stimulation and/or cranial electrotherapy stimulation.

For More Information See Alpha-Stim® Research at www.AlleviaHealth.com



ALLEVIA
Health

Authorized Alpha-Stim® Sales & Service
Phone: (800) 684-9343 FAX: (888) 684-8414
www.AlleviaHealth.com

TENS vs. MET COMPARISON

Typical TENS

MET (e.g., Alpha-Stim®)

Origins	Originally used in 1800s through ~ 1920s. Modern TENS was “rediscovered” in 1967 as a presurgical screening method for dorsal column stimulator (DCS) implants when it was found that the transcutaneous application worked at least as well and often better than the implants.	Used for healing non-union fractures in Japan in 1940s, used in basic science research in U.S. since 1950. Alpha-Stim® was the first commercial home care MET device, introduced by Electromedical Products International, Inc. in 1982.
Specifications	2 - 1000’s Hz Current of approximately 60-100 mA 9 volts average Pulse width of 250-400 µS	0.5 Hz typically (up to 100 Hz) Current of 10-600 microamperes (µA) 11-14 volts preferred Pulse width of 500,000 +/- µS
Perception	Adjusted to “maximum comfortable tolerance”	Subsensory or barely perceivable when treating below the head
Indications	Temporary symptomatic relief of acute, chronic, and post-operative pain	Long term relief of pain and acceleration of the healing process. Alpha-Stim® also has cranial electrotherapy stimulation capability to control anxiety, insomnia, and depression.
How Supplied	Home care only. Clinical treatments are not practical due to lack of residual effect.	Clinical use by health care professionals and home care.
Cummulative Effects	No residual effect: like eyeglasses, must be worn constantly. Like drugs, tolerance is a problem. Electrodes become expensive over time.	Cumulative effects. No tolerance. Chronic conditions usually respond best to brief 1-20 minute treatments on alternate days. Uses electrodes or probes. Less usage overall and use of probes instead of electrodes makes microcurrent much more cost effective than TENS over time.
Indications	May not be used on head or neck. Systemic, abdominal, back, lower and upper extremities only.	Includes head and neck pain in addition to systemic, abdominal, back, lower and upper extremities
Contraindications	Transcranially, pregnancy, pacemakers, over or through heart, near carotid sinus area, metastatic carcinoma, metallic implants	Demand type pacemakers, pregnancy, carotid sinus area, eyes



Authorized Alpha-Stim® Sales & Service
Phone: (800) 684-9343
www.AlleviaHealth.com

BIBLIOGRAPHY

Annotated abstracts, PDFs, new research, tutorials, and case reports are available at www.AlleviaHealth.com.

Randomized Controlled Trials

Mellen, R. R., and W. Mackey (2009). Reducing sheriff's officers' symptoms of depression using cranial electrotherapy stimulation (CES): a control experimental study. *The Correctional Psychologist*, 41(1):9-15.

Mellen, R. R., and W. Mackey (2008). Cranial electrotherapy stimulation (CES) and the reduction of stress symptoms in a sheriff's jail security and patrol officer population. *American Jails*, 22(5):32-38.

Tan, G., D. H. Rintala, J. Thornby, J. Yang, W. Wade, and C. Vasilev (2006). Using cranial electrotherapy stimulation to treat pain associated with spinal cord injury. *Journal of Rehabilitation Research and Development*, 43:461-474.

Cork, R. C., P. Wood, N. Ming, C. Shepherd, J. Eddy, and L. Price (2004). The effect of cranial electrotherapy stimulation (CES) on pain associated with fibromyalgia. *The Internet Journal of Anesthesiology*, 8(2).

Lichtbroun, A. S., M. C. Raicer, and R. B. Smith (2001). The treatment of fibromyalgia with cranial electrotherapy stimulation. *Journal of Clinical Rheumatology*, 7(2):72-78.

Tomaszek, D. E., and K. Morehead (2001). The use of CES in reducing pain in spinal pain patients (unpublished report).

Schroeder, M. J., and R. E. Barr (2001). Quantitative analysis of electroencephalogram during cranial electrotherapy stimulation. *Clinical Neurophysiology*, 112:2075-2083. Doctoral dissertation, University of Texas at Austin, 191 pages, 1999.

Sizer, P., S. Sawyer, J. Brismee, K. Jones, and J. Slauterbeck (2000). The effect of microcurrent stimulation on postoperative pain after patellar tendon-bone anterior cruciate ligament reconstruction. Presented at the American Physical Therapy Association Annual Conference, Indianapolis, IN, June 2000.

Tan, G., T. Monga, and J. Thornby (2000). Efficacy of microcurrent stimulation on pain severity, psychological stress, and disability. *American Journal of Pain Management*, 10(1):35-44.

Winick, R. L. (1999). Cranial electrotherapy stimulation (CES): a safe and effective low cost means of anxiety control in a dental practice. *General Dentistry*, 47(1):50-55.

Heffernan, M. (1997). The effect of variable microcurrents on EEG spectrum and pain control. *Canadian Journal of Clinical Medicine*, 4(10):4-11.

Heffernan, M. (1996). Comparative effects of microcurrent stimulation on EEG spectrum and correlation dimension. *Integrative Physiological and Behavioral Science*, 31(3):202-209.

Voris, M. D. and S. Good (1996). Treating sexual offenders using cranial electrotherapy stimulation. *Medical Scope Monthly*, 3(11):14-18.

Voris, M. D. (1995). An investigation of the effectiveness of cranial electrotherapy stimulation in the treatment of anxiety disorders among outpatient psychiatric patients, impulse control parolees and pedophiles. *Delos Mind/Body Institute Newsletter*, Dallas and Corpus Christi, TX.

Heffernan, M. (1995). The effect of a single cranial electrotherapy stimulation on multiple stress measures. *The Townsend Letter for Doctors and Patients*, 147:60-64.

Overcash, S. J., and A. Siebenthal (1989). The effects of cranial electrotherapy stimulation and multisensory cognitive therapy on the personality and anxiety levels of substance abuse patients. *American Journal of Electromedicine*, 6(2):105-111.

Zimmerman, S. I., and F. N. Lerner (1989). Biofeedback and electromedicine reduce the cycle of pain spasm pain in low back patients. *Medical Electronics*, 117:108-120. Doctoral dissertation, City University Los Angeles, CA, 284 pages, 1987.

Brotman, P. (1989). Low-intensity transcranial electrostimulation improves the efficacy of thermal biofeedback and quieting reflex training in the treatment of classical migraine headache. *American Journal of Electromedicine*, 6(5):120-123. Doctoral dissertation, City University Los Angeles, CA, 117 pages, 1986.

Gibson, T. H. and D. E. O'Hair (1987). Cranial application of low level transcranial electrotherapy vs. relaxation instruction in anxious patients. *American Journal of Electromedicine*, 4(1):18-21. Doctoral dissertation, California School of Professional Psychology, 152 pages, 1983.

Roth, P. M., and W. J. Thrash (1986). Effect of transcutaneous electrical nerve stimulation for controlling pain associated with orthodontic tooth movement *American Journal of Orthodontics*, 90(2):132-138.

Open Clinical Trials

Bystritsky, A., L. Kerwin, and J. D. Feusner (2008). A pilot study of cranial electrotherapy stimulation for generalized anxiety disorder. *Journal of Clinical Psychiatry*, February 6, 2008: e1-e6.

Kennerly, R. (2004). QEEG analysis of cranial electrotherapy: a pilot study. *Journal of Neurotherapy* (8)2, 2004. Doctoral dissertation, University of North, 425 pages, 2006.

Tae-Kyu Lee, Kwan-Sung Lee, Shin-Soo Jeun, Young-Kil Hong, Chun-Kun Park, Joon-Ki, and Moon-Chan Kim (2004). The control of chronic pain using microcurrent electrical therapy and cranial electrotherapy stimulation. Department of Neurosurgery, Kangnam St. Mary's Hospital, College of Medicine, The Catholic University of Korea, Seoul, Korea. Presented at the Korea Society for Stereotactic and Functional Neurosurgery April 14, 2004.

Kulkarni, A. D. and R. B. Smith (2001). The use of microcurrent electrical therapy and cranial electrotherapy stimulation in pain control. *Clinical Practice of Alternative Medicine*, 2(2):99-102.

Overcash, S. J. (1999). Cranial electrotherapy stimulation in patients suffering from acute anxiety disorders, *American Journal of Electromedicine*, 16(1):49-51.

Smith, R. B., and F. N. Shiromoto (1992). The use of cranial electrotherapy stimulation to block fear perception in phobic patients. *Journal of Current Therapeutic Research*, 51(2):249-253.

Meta-Analyses, Review Articles and Commentaries

Kirsch, D. (2008). CES for mild traumatic brain injury. *Practical Pain Management*, July/August:70-77.

Kirsch, D., and M. Gilula (2008). CES in the treatment of pain-related disorders. *Practical Pain Management*, April:12-25.

Kirsch, D., and M. Gilula (2007). CES in the treatment of insomnia: a review and meta-analysis. *Practical Pain Management*, October:28-39.

Tan, G., and M. P. Jensen (2007). Integrating complementary and alternative medicine (CAM) into multidisciplinary chronic pain treatment. In *Multidisciplinary Chronic Pain Management: a Guidebook for Program Development and Excellence of Treatment*. Schatman and Campbell (editors), Taylor & Francis, Pp. 75-99.

Gilula, M. (2007). Cranial electrotherapy stimulation and fibromyalgia. *Expert Review of Medical Devices* 4(4):489-495, 2007.

Kirsch, D., and M. Gilula (2007). CES in the treatment of depression: a review of the results of meta-analysis conducted on CES studies – Part 2. *Practical Pain Management*, June:32-40.

Kirsch, D., and M. Gilula (2007). CES in the treatment of depression – Part 1. *Practical Pain Management*, May:33-41.

Sussman, N. (2007). Editor's Note: What next? Overcoming treatment resistance. *Primary Psychiatry*, 14(3):15-16.

Kirsch, D., and M. Gilula (2007). CES in the treatment of anxiety disorders: statistical considerations in the meta-analysis of cranial electrotherapy stimulation (CES) treatment of anxiety disorders – Part 2. *Practical Pain Management*, April:22-39.

Kirsch, D. L., and M. Gilula (2007). CES in the treatment of anxiety disorders: A review and meta-analysis of cranial electrotherapy stimulation (CES) in the treatment of anxiety disorders – Part 1. *Practical Pain Management*, March:40-47.

Tan, G., Alvarez, J. A., and M. P. Jensen (2006). Complementary and alternative medicine approaches to pain management. *Journal of Clinical Psychology: In Session*, 62(11):1419-1431, 2006.

Kirsch, D. L. (2006). Cranial electrotherapy stimulation in the treatment of fibromyalgia. *Practical Pain Management*, 6(6):60-64.

Kirsch, D. L. (2006). Cranial electrotherapy stimulation for the treatment of anxiety, depression, insomnia and other conditions. Insert: Giordano, James. Illustrating how CES works. *Natural Medicine*, 23:118-120.

Gilula, M. F., and D. L. Kirsch, (2005). Cranial electrotherapy stimulation review: a safer alternative to psychopharmaceuticals in the treatment of depression. *Journal of Neurotherapy*, 9(2):7-26.

Gilula, M. F. and P. R. Barach (2004). Cranial electrotherapy stimulation: a safe neuromedical treatment for anxiety, depression or insomnia. *Southern Medical Journal*. 97(12):1269-1270.

Case Series and Case Reports

- Eidelman W.S. (2009). Control of cigarette cravings with cranial electrotherapy stimulation. *The Townsend Letter for Doctors*, 311(6):81-85.
- Bracciano et al. (2009). Cranial electrotherapy stimulation in the treatment of posttraumatic stress disorder. Poster presented at Creighton University St. Albert's Day, Omaha, Nebraska, March 31, 2009.
- Mellen, R. R., and S. Mitchell (2008). Cranial electrotherapy stimulation: a case study. *The Correctional Psychologist*, 4(4):4-8.
- Childs, A., and L. Price (2007). Cranial electrotherapy stimulation reduces aggression in violent neuropsychiatric patients. *Primary Psychiatry*, 14(3):50-56, 2007.
- Childs, A. (2005). Cranial electrotherapy stimulation reduces aggression in a violent retarded population: a preliminary report. *The Journal of Neuropsychiatry and Clinical Neurosciences*, 17(4):548-551.
- Overcash, S. (2005). The effect of Alpha-Stim SCS and Roshi complex adaptive and discrete protocols on a 9-year-old anxious, dyslexic male with attention deficit disorder: A case study. *Journal of Neurotherapy*, 9(2):63-77.
- Plotnick, S. E. (2005). Finding hope: Alpha-Stim 100 may help clinicians yield better fibromyalgia results. *Advance for Directors in Rehabilitation*, p. 82, May 2005.
- Frick, A., and D. McCauley (2005). Microcurrent electrical therapy heals a recalcitrant wound in a horse. *Journal of Equine Veterinary Science*, 25(10):418-422.
- Smith, R. B. (2001). Is microcurrent stimulation effective in pain management? An additional perspective. *American Journal of Pain Management*, 11(2):62-66.
- Clark, N., D. Mills, and J. Marchant (2000). Evaluation of the potential efficacy of the Alpha-Stim SCS in the horse. DeMontfort University Equestrian Centre and Field Station, Caythorpe, Lincolnshire, UK. Jan 2000.
- Alpher, E. J. and D. L. Kirsch (1998). Traumatic brain injury and full body reflex sympathetic dystrophy patient treated with cranial electrotherapy stimulation. *American Journal of Pain Management*, 8(4):124-128.
- Bauer, W. (1983). Neuroelectric Medicine. *Journal of Bioelectricity*, 2(2&3):159-180.
- Bauer, W. (1983). Electrical treatment of severe head and neck cancer pain. *Archives of Otolaryngology*, 109(6):382-383.
- Kirsch, D. L., and R. B. Smith (2004). Cranial electrotherapy stimulation for anxiety, depression, insomnia, cognitive dysfunction, and pain. Chapter 44 in *Bioelectromagnetic Medicine*. P. J. Rosch, Ed. Marcel Dekker, New York, Pp. 727-740.
- DeBock, P. (2000). European perspective: A comparison between MET and TENS. *Physical Therapy Products*, Sept 2000:28-33.
- Mercola, J. M. and D. L. Kirsch (1995). The basis for microcurrent electrical therapy in conventional medical practice. *Journal of Advancement in Medicine*, 8(2):107-120.

Tutorials

- Kirsch, D. L. (2006). Electromedical treatment of headaches. *Practical Pain Management*, 6(8):58- 65.
- Kirsch, D. L. (2006). Microcurrent electrical therapy (MET): A tutorial. *Practical Pain Management*, 6(7):59-64.
- Kirsch, D. L. (2002). A practical protocol for electromedical treatment of pain. Chapter 61 in *Pain Management: A Practical Guide for Clinicians* (the textbook of the American Academy of Pain Management) edited by Richard S. Weiner, CRC Press, Boca Raton, FL, Pp. 759-776.
- Kirsch, D. L. (2002). Electromedicine: the other side of physiology. Chapter 60 in *Pain Management: A Practical Guide for Clinicians* (the textbook of the American Academy of Pain Management) edited by Richard S. Weiner, CRC Press, Boca Raton, FL, Pp. 749-758.



ALLEVIA
Health

Authorized Alpha-Stim® Sales & Service
Phone: (800) 684-9343 FAX: (888) 684-8414
www.AlleviaHealth.com

PRESCRIBING INFORMATION FOR ALPHA-STIM®

Federal Law in the USA restricts Alpha-Stim® devices to sale by, or on the order of a licensed health care practitioner.

Indications: Treatment Chart

	Alpha-Stim® 100	Alpha-Stim® SCS	Alpha-Stim® PPM
Anxiety	•	•	
Insomnia	•	•	
Depression	•	•	
Pain	• multiple sites		• 1-2 localized areas

Alpha-Stim® 100, Alpha-Stim® SCS, and Alpha-Stim® PPM microcurrent electrical therapy (MET) and cranial electrotherapy stimulation (CES) technology is continuously being subjected to rigorous study and evaluation by the international medical community. Findings to date indicate that the Alpha-Stim® 100 and Alpha-Stim® PPM (MET) are effective treatment with broad applications for a variety of syndromes involving pain, or for short term relief of the symptoms of pain, and the Alpha-Stim® 100 and Alpha-Stim® SCS (CES) are effective treatment with broad applications for the management of anxiety, depression, and/or insomnia, or for the short term relief of the symptoms of anxiety, depression and/or insomnia. In many cases it is the sole therapeutic method required. Effective results in pain management have been seen during and/or subsequent to stimulation over affected body parts, adjacent areas, and areas distant from those in pain. As with any therapeutic intervention, not all people will respond to the Alpha-Stim® 100, Alpha-Stim® PPM or Alpha-Stim® SCS. The degree of efficacy will vary with the nature of the problem being treated, the overall health of the person, and with the method of treatment.

Contraindications: The Alpha-Stim® 100, Alpha-Stim® PPM or Alpha-Stim® SCS may effect the operation of cardiac pacemakers (particularly demand type pacemakers). Do not stimulate directly on the eyes, or over the carotid sinus (on the neck beside the larynx).

Precautions: For external use only. Do not allow children to use or handle these devices without adult supervision. Do not operate potentially dangerous machinery or vehicles during, and in some cases, for several hours after treatment with the Alpha-Stim® 100 or Alpha-Stim® SCS (CES). Caution is advised in cases where other forms of analgesia (pain control) would not be used; such as to retain the beneficial aspects of pain for diagnosis or in cases where people may overuse pain-controlled areas. Safety of stimulation has not been established during pregnancy. There have been isolated reports of blood pressure being lowered by CES so care should be taken while using the Alpha-Stim® 100 or Alpha-Stim® SCS with high blood pressure medication.

Adverse Effects (Alpha-Stim® 100 and Alpha-Stim® SCS): Adverse effects are usually mild and self-limiting. Adverse effects seen in approximately 4,541 patients in controlled, open, uncontrolled conditions, and by physician survey and reasonably associated with the use of CES are dizziness (6 cases, 0.13%), skin irritation/electrode burns (5 cases, 0.11%), and headaches (9 cases, 0.20%). Prolonged CES treatment at higher than necessary currents may cause dizziness or nausea that can last from hours to days. Treatment immediately prior to going to sleep may cause difficulty sleeping due to increased alertness. It is recommended that CES be used at least 3 hours before going to sleep. Paradoxical reactions such as hyperexcited states, increased anxiety, and sleep disturbances may occur, but are rare.

Manufactured and marketed by:
Electromedical Products International, Inc.
2201 Garrett Morris Parkway
Mineral Wells, Texas 76067-9484 USA
Tel. (800) 367-7246



Alpha-Stim® 100 and
Alpha-Stim® SCS



Type B Equipment.
These stimulators
are internally
powered only.



See instructions
for use. Read the
manual thoroughly
before use.

SAFE & EFFECTIVE
RELIEF



ALLEVIA
Health

Authorized Alpha-Stim® Sales & Service
Phone: (800) 684-9343 FAX: (888) 684-8414
2312 NW Kings Blvd., Corvallis, OR 97330

STATEMENT OF MEDICAL NECESSITY

To Whom It May Concern:

I am ordering for purchase and/or rental an Alpha-Stim® prescription electromedical device complete with accessories for the below named patient to use at home as a conservative method of treating pain, anxiety, depression and/or insomnia. This technology is supported by successful outcomes documented by more than 55 published articles (Abstracts and PDFs of research articles are available at www.AlleviaHealth.com). It has shown to be consistently effective so I have advised the patient to utilize it on a regular basis.

Please dispense this Alpha-Stim® device for my patient:

___ Alpha-Stim® 100 microcurrent stimulator for treatment of pain, and cranial electrotherapy stimulator for treatment of anxiety, depression, and/or insomnia

___ Alpha-Stim® SCS cranial electrotherapy stimulator for treatment of anxiety, depression, and/or insomnia

___ Alpha-Stim® PPM microcurrent stimulator for treatment of pain

See Prescribing Information for model comparison. Allevia Health, Inc. provides detailed printed instructions and follow-up support by phone for patients who purchase or rent an Alpha-Stim®. In addition, our Alpha-Stim® units come with 5 year warranty.

PATIENT

Name _____

Address _____

City _____ State _____ Zip _____

Day Phone (____) _____

Home Phone (____) _____

Fax (____) _____

Email _____

Date of Birth _____

PRACTITIONER

Licensed
Practitioner's
Signature

Practitioner's Name _____

Degree _____ State License No./UPIN _____

Specialty _____

Office/Clinic _____

Street Address _____

City _____ State _____ Zip _____

Office Phone (____) _____ Fax (____) _____

Date of Order _____

Patient's Diagnoses applicable to Alpha-Stim® treatments:

1. _____ ICD9/DSM-IV Code _____

2. _____ ICD9/DSM-IV Code _____

3. _____ ICD9/DSM-IV Code _____

FAX form to (888) 684-8414

or you may mail it to:

Allevia Health, Inc.

2312 NW Kings Blvd. Corvallis, OR 97330

Questions? (800) 684-9343

www.AlleviaHealth.com

GET THE RELIEF YOU DESERVE



ALPHA-STIM® SCS RENT-TO-OWN

All rental payments go towards purchase!

Rent-to-Own From:

AH: Allevia Health, Inc., 2312 NW Kings Blvd., Corvallis, OR 97330

Rent-to-Own To:

Name _____

Shipping Address _____

City _____ State _____ Zip _____

Telephone (____) _____ E-mail _____

(optional for UPS tracking & AH support)

FAX to (888) 684-8414

or you may mail it to us at:
Allevia Health, Inc.
2312 NW Kings Blvd.
Corvallis, OR 97330

*Include your statement of medical
necessity (or Rx), or fax separately*

Questions?

(800) 684-9343

Terms of Agreement:

1. This Rent-to-Own Agreement is between AH and Renter for 1 (one) Alpha-Stim® SCS, with all accessories for a period of 7 months or upon termination of this Agreement by Renter returning the Alpha-Stim® SCS to AH in excellent condition (including all original packaging, manual), whichever occurs first. Unit is shipped UPS Delivery (FREE) to Renter unless otherwise indicated in cover letter. All duties and taxes are to be paid by Renter and return freight is Renter's responsibility if the unit is returned to AH.
2. Payment on this Rent-to-Own Agreement by Renter to AH shall be through automatic monthly credit card billings as follows: \$85 per month rental payments for months 1 through 7. (The list of billing dates will be on your invoice.)
3. This is a total of \$595 for the entire 7-month period. The Renter may choose to purchase the unit at any time during the rental period.
4. Time is of the essence in this Agreement. During the term of this Agreement, the Alpha-Stim® SCS covered herein remains AH's property with assurance of AH's right of recovery with or without process of law. Upon receipt of the final payment the Alpha-Stim® SCS will become the property of Renter. In the event of default of a monthly payment through denial of credit card payment or other breach, Renter must return the Alpha-Stim® SCS to AH without delay. In the event of default or return of the Alpha-Stim® SCS prior to the 7th payment, AH may retain all money paid as liquidated damages and rental. Damages to the Alpha-Stim® SCS and its packaging and accessories outside of regular wear and tear become an extra charge to Renter. In the event of litigation, attorney's fees shall be added hereto.
5. Renter acknowledges that the Alpha-Stim® SCS hereby rented is for the Renter's sole benefit and in the event of loss, damage, theft or destruction of the unit, Renter must pay to AH the full amounts due as described in paragraph 2 above. Renter agrees to exercise excellent care in the handling and operation of the Alpha-Stim® SCS. The Alpha-Stim® SCS is warranted for 5 years exclusive of accessories.
6. Renter and AH agree that a facsimile or (FAX) transmission of any original documents shall have the same effect as the original and that the signed facsimile copies of documents shall be given full effect as if an original.
7. Billing will be done monthly by AH to Renter's credit card number. Please check type of card: VISA MC AmEx Discover

Billing Information: Card No.: _____ *If you prefer you may phone in billing info.*

Cardholder's Name: _____ Expiration Date: _____

This agreement is entered into between AH and Renter as of the date the unit is dispensed to patient.

I agree to the terms and credit card charges as set forth above:

Serial # _____
(AH will fill in)

Date: _____, 2010

Renter's Signature _____

GET THE RELIEF YOU DESERVE



ALPHA-STIM® 100 RENT-TO-OWN

All rental payments go towards purchase!

Rent-to-Own From:

AH: Allevia Health, Inc., 2312 NW Kings Blvd., Corvallis, OR 97330

Rent-to-Own To:

Name _____

Shipping Address _____

City _____ State _____ Zip _____

Telephone (____) _____ E-mail _____

(optional for UPS tracking & AH support)

FAX to (888) 684-8414

or you may mail it to us at:
Allevia Health, Inc.
2312 NW Kings Blvd.
Corvallis, OR 97330

*Include your statement of medical
necessity (or Rx), or fax separately*

Questions?

(800) 684-9343

Terms of Agreement:

1. This Rent-to-Own Agreement is between AH and Renter for 1 (one) Alpha-Stim® 100, with all accessories and a training DVD (\$29.95 value) for a period of 9 months or upon termination of this Agreement by Renter returning the Alpha-Stim® 100 to AH in excellent condition (including all original packaging, manual, DVD), whichever occurs first. Unit is shipped UPS Delivery (FREE) to Renter unless otherwise arranged. All duties and taxes are to be paid by Renter and return freight is Renter's responsibility if the unit is returned to AH.
2. Payment on this Rent-to-Own Agreement by Renter to AH shall be through automatic monthly credit card billings as follows:
(a) \$100 /month rental payment and \$95 damage deposit for month 1 (Total \$195, paid prior to shipment)
(b) \$100 /month rental payments for months 2 through 9. (The list of billing dates will be on your invoice.)
3. This is a total of \$995 for the entire 9-month period. The damage deposit will be refunded upon return of the unit in excellent condition, otherwise will be applied towards the purchase of the unit.
4. Time is of the essence in this Agreement. During the term of this Agreement, the Alpha-Stim® 100 covered herein remains AH's property with assurance of AH's right of recovery with or without process of law. Upon receipt of the final payment the Alpha-Stim® 100 will become the property of Renter. In the event of default of a monthly payment through denial of credit card payment or other breach, Renter must return the Alpha-Stim® 100 to AH without delay. In the event of default or return of the Alpha-Stim® 100 prior to the 9th payment, AH may retain all money paid as liquidated damages and rental. Damages to the Alpha-Stim® 100 and its packaging and accessories outside of regular wear and tear become an extra charge to Renter. In the event of litigation, attorney's fees shall be added hereto.
5. Renter acknowledges that the Alpha-Stim® 100 hereby rented is for the Renter's sole benefit and in the event of loss, damage, theft or destruction of the unit, Renter must pay to AH the full amounts due as described in paragraph 2 above. Renter agrees to exercise excellent care in the handling and operation of the Alpha-Stim® 100. The Alpha-Stim® 100 is warranted for 5 years exclusive of accessories.
6. Renter and AH agree that a facsimile or (FAX) transmission of any original documents shall have the same effect as the original and that the signed facsimile copies of documents shall be given full effect as if an original.
7. Billing will be done monthly by AH to Renter's credit card number. Please check type of card: VISA MC AmEx Discover

Billing Information: Card No.: _____ *If you prefer you may phone in billing info.*

Cardholder's Name: _____ Expiration Date: _____

Serial # _____

(AH will fill in)

I agree to the terms and credit card charges as set forth above:

Date: _____, 2010

Renter's Signature

SAFE & EFFECTIVE RELIEF



INSURANCE FILING 2010

How to initiate insurance filing for an Alpha-Stim® device

We offer insurance filing services for purchases of Alpha-Stim® devices. Most insurance plans cover the Alpha-Stim® 100, and make a partial payment, when prescribed for some type of chronic pain in the body. For other diagnoses and for the Alpha-Stim® SCS, a lower but significant percentage of claims are approved, with a partial payment made.

To initiate a claim, please fill out our Insurance Claim Processing Patient Information Form (call or e-mail to request). Then FAX this form, your Statement of Medical Necessity, and the Rent-to-Own form to us at (888) 684-8414 or mail to Allevia Health, Inc. at the address below. We will ship your Alpha-Stim® to you by UPS. Given it usually takes 60 days to fully process a claim for an Alpha-Stim®, we suggest that you start the rent-to-own plan (or call to purchase) while your claim is pending, and we will ship your Alpha-Stim® to you immediately.

If approved by your insurance, all payments collected from the insurance company will be applied to the purchase of your Alpha-Stim® or to the latter payments on the rent-to-own plan. If they pay in full, then we will refund your initial rental payment(s).

Please note that while we can seek pre-approval for you and we can inquire about what your benefits cover, the information we receive from the insurance company is usually not complete and not binding to them. Usually patients do not know how much their insurance will cover until the claim has been filed and processed by the insurance company.

If you would prefer to file yourself for reimbursement from your insurance company, you may do so. If you are treating chronic pain below the head with the Alpha-Stim® 100 or PPM, then use billing code E0730. Otherwise, for other diagnoses and for the Alpha-Stim® SCS, use code E1399 and include a short note of explanation from your practitioner.

What if my insurance does not cover the Alpha-Stim®?

For some patients the Alpha-Stim® is an out-of-pocket expense. For this reason we offer rent-to-own options as well as three different Alpha-Stim® models to meet your needs. With our rental plans you may return the unit at any time, with no further payments due (and deposit refundable), or if you continue renting, you will ultimately own the unit.

Another option with significant discount available is to rent-to-own a refurbished unit, which comes with one year warranty. Call to inquire about availability and pricing. (We do not offer insurance filing for refurbished units but you may file for reimbursement.)

How to file an insurance claim for Alpha-Stim® supplies

We can file with your insurance for Alpha-Stim® supplies if ordered at the same time as your Alpha-Stim® device. For the Alpha-Stim® SCS and Alpha-Stim® 100 we recommend requesting 1 large bottle of Alpha Conducting Solution™, 1 extra box of Earclip Electrode Pads, and 6 batteries. For the Alpha-Stim® 100 we recommend also requesting 10 packs of AS-Trodes™ if you plan to treat pain.

If you wish to file with insurance for supplies and you are ordering after your insurance filing was processed for your Alpha-Stim® device, then you have two options. If you order >\$200 worth of supplies then we can file on your behalf; please fax the Insurance Claim Processing Patient Information Form and Order Form to us at (888) 684-8414. Or if you prefer, you may purchase supplies and submit your receipt to your insurance company using the following billing codes: A4556 for AS-Trodes™, earclip electrode pads (felts), or probe electrode pads; A4595 for ear clip electrodes; A4558 for Alpha Conducting Solution™, A4630 for replacement batteries.



Questions?
(800) 684-9343

Authorized Alpha-Stim® Sales & Service
Phone: (800) 684-9343 FAX: (888) 684-8414
2312 NW Kings Blvd., Corvallis, OR 97330
www.AlleviaHealth.com

© Copyright 2010 by Allevia Health, Inc. All Rights Reserved.

GET THE RELIEF YOU
DESERVE



**ALLEVIA
Health**

Authorized Alpha-Stim® Sales & Service
Phone: (800) 684-9343 Fax: (888) 684-8414
2312 NW Kings Blvd., Corvallis, OR 97330

ORDER FORM 2010

5 Year Warranty & Technical Support with Alpha-Stim® devices

Please print or type all shipping information.

Name _____

Address _____

City _____ State _____ Zip _____

Home Phone (____) _____

Email for Shipment Tracking & Tech Support _____ Date of Order _____

Order at www.AlleviaHealth.com
or FAX form to (888) 684-8414

or you may mail it to:

Allevia Health, Inc.

2312 NW Kings Blvd. Corvallis, OR 97330

**FAX or mail your Statement of
Medical Necessity for devices only
Questions? (800) 684-9343**

Item	Price	Quantity	Total
Alpha-Stim® 100 for anxiety, depression, insomnia, pain	\$995		
Alpha-Stim® SCS for treating anxiety, depression, insomnia	\$595		
Alpha-Stim® PPM for treating pain in localized area	\$595		
AS-Trode™ V Silver Electrode Pads (Pack of 4)	\$24		
AS-Trode™ V Silver Electrode Pads (10 Packs of 4) (SAVE 37%)	\$150		
256 Earclip Electrode Felt Pads	\$15		
100 Probe Electrode Pads	\$19		
Alpha Conducting Solution travel size (15 mL)	\$10		
Alpha Conducting Solution refill bottle (250 mL)	\$24		
Earclip Electrodes	\$36		
Probe (for Alpha-Stim® 100)	\$15		
Set of 2 Replacement Wires (48" for Alpha-Stim® 100)	\$18		
Set of 2 Replacement Wires (48" for Alpha-Stim® PPM)	\$18		
<i>Electric Body Electric Mind, The Alpha-Stim® 100 DVD</i>	\$30		
<i>The Body Electric by Robert Becker, MD</i>	\$13		
<i>Shipping: FREE for orders >\$50. For orders <\$50: USPS \$5, UPS Ground \$10, UPS 2nd Day \$20</i>	Subtotal		
	Shipping		
	TOTAL		

Method of Payment

Check enclosed (payable to Allevia Health, Inc.)

Charge my credit card: Visa Mastercard AmEx Discover

Card Number: _____ Expiration Date _____

Cardholder's Signature _____

Return Policy: If you are not completely satisfied with your Alpha-Stim® unit for any reason, return it within 30 days, postage paid by you, in its original salable condition, including all accessories, original packaging, manual, treatment protocols, and DVD (if purchased with Alpha-Stim® 100) for refund of the purchase price minus 15% restocking fee and minus the cost of shipping and handling at the time of purchase. Shipping charges will not be refunded. Guarantee applies only to new Alpha-Stim® stimulators purchased directly from Allevia Health, Inc. Supplies and accessories are not returnable.

GET THE RELIEF YOU DESERVE



Alpha-Stim® SCS Ear Clip Protocol

CRANIAL ELECTROTHERAPY

Stimulation Settings (ear clip electrodes)

Alpha-Stim® Model:
Alpha-Stim® SCS

Treatment Mode:

Insert L-shaped plug from ear clips all the way into device so plug is touching the surface of the device. A felt pad should be on each side of each ear clip. Saturate each felt pad with 2-3 drops of Alpha Conducting Solution™.

Current Intensity:

Use dial to adjust intensity of stimulation to comfortable level.

Timer:

Press timer button (on the right) to select desired treatment time. It toggles between 20 or 60 minutes. The Alpha-Stim® SCS will turn itself off once treatment time is complete.

1. After preparing the device and ear clips as described at left, place ear clips on ear lobes, close to the jaw as shown.

2. Turn the current intensity dial to "0" and press the power button on.

3. Use dial to slowly increase current intensity until you feel a comfortable tingling sensation. Immediately decrease current intensity if tingling becomes uncomfortable or if you feel dizzy. Tingling is caused by the current breaking the skin resistance. You may feel it in one or both ears. (If you do not feel any sensation when you turn up the intensity, please press the L-shaped plug very hard into the device so that it snaps into place, flush with the unit. *There should be no visible aqua color.* Also replace the battery. If the issue persists please call us for tech support.)

4. If you find the treatment comfortable at a setting of 3 or higher on the intensity dial, then treat for 20 minutes. If you prefer a current intensity of 1 or 2 on the dial, then treat for 60 minutes. Adjust the timer setting to 20 or 60 minutes.

5. *Do not treat at uncomfortably high current levels!* Too much current can cause vertigo or nausea and does not lead to better results.

6. It is advised to complete a treatment session for the full 20-60 minutes once you start it to avoid being "caught" in a state of heaviness that some patients may experience as soon as a few minutes into the treatment. You should feel light and refreshed, not tired or groggy, after a CES treatment.

7. After a treatment, remove and discard the felt pads, dry the metal surfaces, and place a new felt pad on each surface. An alcohol wipe may be used to sterilize the surface or to clean off any glue residue.

8. For depression, the manufacturer recommends using CES daily for 3 or 4 weeks and then 2 or 3 times per week. For anxiety and insomnia, the manufacturer recommends using CES daily for the first 1 to 2 weeks, then 2 or 3 times per week, or as needed.

9. Questions? Please email info@alleviahealth.com or call 800-684-9343. We are open Monday through Friday, 8A - 5P Pacific Time or 11A - 8P Eastern Time.



Alpha-Stim® Sales & Service
2312 NW Kings Blvd.
Corvallis, OR 97330
(800) 684-9343 Phone
(888) 684-8414 Fax
www.AlleviaHealth.com
info@alleviahealth.com

References

Alpha-Stim® 100 Owner's Manual (2002). Electromedical Products International, Inc.

Kirsch, D.L. (2002). A practical protocol for electromedical treatment of pain. Chapter 61 (pp. 759-776) In *Pain Management: A Practical Guide for Clinicians*. Weiner, R (ed.) CRC Press, Boca Raton, Florida.

The information provided here is not a substitute for the Owner's Manual. Read the Prescribing Information in the Owner's Manual for Contraindications, Precautions and Adverse Effects associated with the use of Alpha-Stim®. Copyright 2010 Allevia Health, Inc. ALL RIGHTS RESERVED. Alpha-Stim® is registered in the US Patent and Trademark Office and worldwide.

GET THE RELIEF YOU DESERVE



ACCESSORIES & SUPPLIES TIPS



Tip! To prevent leakage, discard the remaining plastic ring from the cap after opening the small (15 ml) container of Alpha Conducting Solution™.

- ▶ Do not discard this bottle! It is refillable. To refill, simply push the top off with your thumb.



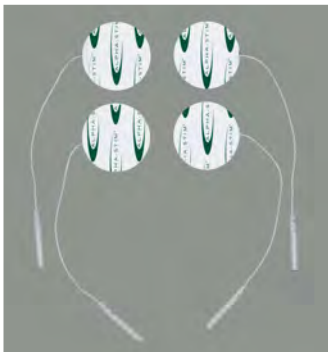
Tip! To prevent wire breakage, do not wrap earclips or lead wires around your Alpha-Stim® unit. Store all wires loosely packed in the protective case or hanging in a safe location. Always remove earclips from your ear lobes by pinching the clips, not by pulling them off by the wire.

Tip! This large 250-ml container provides 16 refills of the travel size container (15 ml) of Alpha Conducting Solution™ that came with your unit.



Tip! To replace felt pads on your earclips:

- ▶ Remove old felt pads after you complete a CES treatment.
- ▶ If there is glue residue you may clean the metal surfaces of earclips with alcohol.
- ▶ When the surfaces are dry, place a new felt pad on each surface.
- ▶ The manufacturer indicates felts are intended for single use. Some clients with their own Alpha-Stim® use the felts several times before replacing them.



Tip! You can extend the life of your AS-Trode™ silver electrode pads by following these simple rules:

- ▶ Cleanse skin with mild soap and water to remove body oils, lotions, make-up and perspiration. Rinse thoroughly to remove all soap residue and let dry before applying electrodes.
- ▶ When applying electrodes, make sure there is "total contact" (no curling, gaps, etc.) with the skin.
- ▶ Remove electrodes from the skin by lifting the edge of the pad, not by pulling them off by the lead wire.
- ▶ Place electrodes on their protective backing and seal the bag after each treatment to prevent the gel from drying out.
- ▶ If the gel becomes less sticky, apply two drops of the Alpha Conducting Solution™ to each pad to re-hydrate its surface.
- ▶ When the gel loses its ability to adhere properly to the skin, it is time to replace electrodes.

Can't feel current?

If you can not feel any tingling sensation from the earclips even when the current is turned up high, check to see that the plug is all the way in, such that it is touching the unit. There should be no visible aqua color. Also replace the battery. Otherwise please call us for tech support. Note, most people do not feel the current when using AS-Trodes™, this is normal. We recommend our LED Microcurrent Tester to test your unit periodically.



Alpha-Stim® Sales & Service
2312 NW Kings Blvd.
Corvallis, OR 97330
(800) 684-9343 Phone
(888) 684-8414 Fax
www.AlleviaHealth.com
info@alleviahealth.com

Place your supplies order at:
<http://alleviahealth.com/supplies.htm>
Free Shipping for orders >\$50